



NEW CONSTRUCTION SYSTEM

The Vapor Sentinel New Construction System is a solution for soil gas control to minimize and prevent chemical vapor intrusion in newly constructed buildings. This three-part system works together to form an alternative gas-permeable layer, eliminating the need for trenching

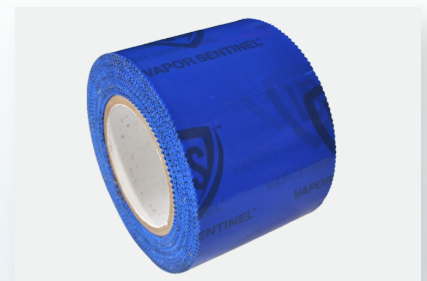
and aggregate backfill. With a simplified installation process, the New Construction System saves installation time and costs. If required, the system can easily be activated to enhance mitigation and monitor soil gas concentrations after construction is complete.



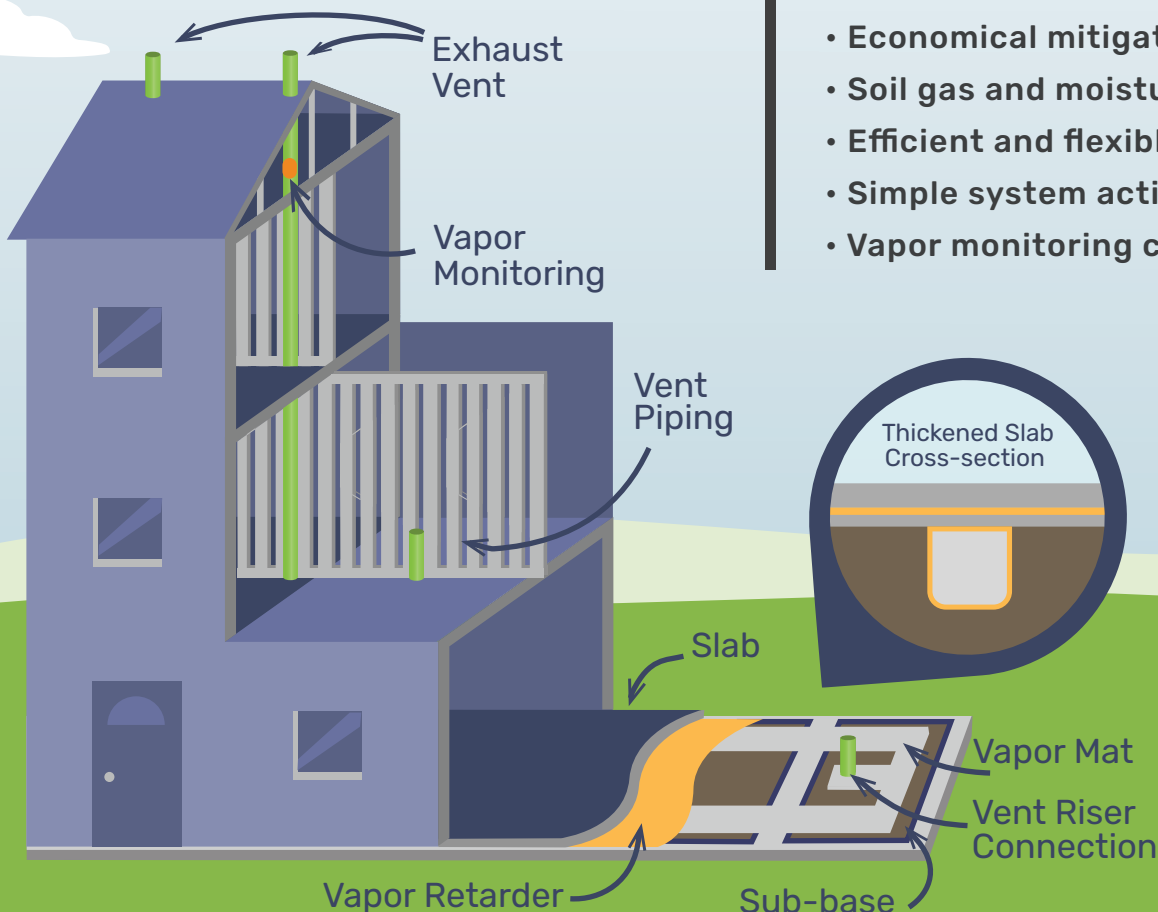
VAPOR MAT



VAPOR RETARDER



SEAMING TAPE



FEATURES:

- Economical mitigation strategy
- Soil gas and moisture control
- Efficient and flexible installation
- Simple system activation
- Vapor monitoring capabilities

SPECIFICATION & PHYSICAL PROPERTIES

VAPOR MAT

Vapor Mat is a heavy-duty, impact resistant, cusped material that facilitates a pathway for soil gas transmission.

Thickness	1 in.
Compression Strength	9,500 psf
Roll Thickness	1 in.
Roll Width	12"
Roll Length	150 ft
Roll Weight	62 lbs

VAPOR RETARDER (10C, 20C)

Vapor Retarder is installed over the Vapor Mat and taped at the seams and penetrations using Seaming Tape to create an effective seal of the soil gas plenum. Vapor Sentinel 20 mil Retarder includes documented VOC diffusion ratings for BTEX, PCE, and TCE suitable for vapor intrusion projects.

Thickness	10 mil	20 mil
Under Slab Vapor Retarder	Exceeds Class A,B,C	Exceeds Class A,B,C
Water Vapor Permeance	<0.03 perms	<0.01 perms
Puncture Resistance	>2,800 grams	3,500+ grams
Tensile Strength	>45 lbf/in	>97.7 lbf/in
Roll Dimensions	12'x100'/1,200 ft ²	14'x105'/1,470 ft ²
Roll Weight	58 lb	150 lb

SEAMING TAPE

Barrier Seaming Tape is a low-permeance tape designed to securely connect the Vapor Retarder and create a strong seal against chemical vapors.

Dimensions	3.75" x 180"
Total Thickness	6 mil
Permeance	0.03 perms
Tensile Strength	>12 lbf/in
Adhesion (20 min dwell ss, PSTC 101)	84oz/in
Ultraviolet Resistance	Excellent